

# 60

# SERIES

Medium Duty

Load Capacity: 175 to 400 lbs.

## Quality Features

- **FOUR-SIDED, DOUBLE BALL RACEWAY.** Hardened steel ball bearings touch upper and lower swivel raceway "on all four sides." This protects the central king pin from shock loading for free swiveling under heavy loads.
- **HEAT-TREATED MOVING PARTS.** All moving parts are hardened to a precise molecular depth and Rockwell hardness. This extends caster life under rugged conditions and shock loads.
- **RACEWAY DUST CAP.** Dust cap protects the raceway from contamination by dust, dirt, moisture, and other debris.
- **TWO-PIECE RIGID CASTER.** Rigid caster utilizes a welded top plate and yoke design instead of a one-piece stamped yoke as used on competitive brands.
- **THREAD GUARD.** Keep unwanted materials out of the wheel bearings thus increasing the life of the caster. Standard on most wheels.



## Options

- Cart Washable Grease Seals
- Maintenance Free Swivel Bearings
- High-Temperature Wheels
- Conductive or Static-Dissipative Wheels
- Gray, Non-Marking Wheels
- Powder Coated Finishes

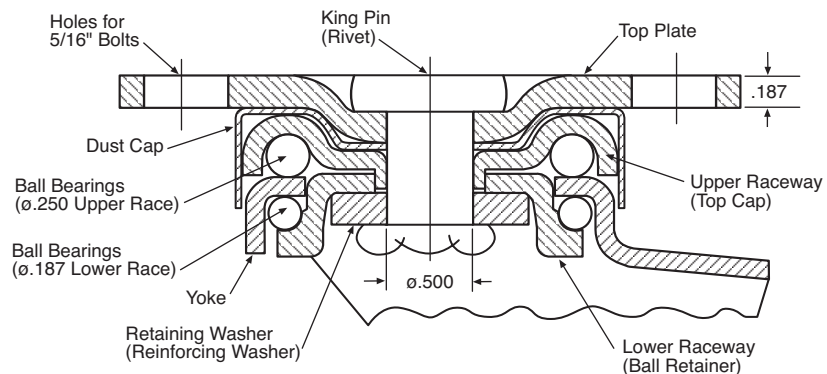
Our most popular series. This exceptional caster has been used for over 75 years in thousands of industrial and institutional applications. All wearing parts are heat treated to last longer, even under the most demanding applications. No other caster will outlast or outperform the Darnell 60 Series.

Typical applications include:

- Shop Carts & Equipment
- Wire Carts and Racks
- Food Equipment
- Medical Devices
- Instrument Cases
- Stage & Theater Sets
- Moving Dollies

Standard finish is Zinc Plating. Available with numerous plate and stem options, as well as brakes, swivel locks, special finishes.

### FOUR SIDED DOUBLE BALL BEARING RACEWAY 60 SERIES



## Wheel Selection

NEOPRENE RUBBER

ADVANCED ELASTOMER

HI-CAP NEOPRENE

EXTRA-SOFT NEOPRENE

HARD RUBBER

NEOPRENE OR  
POLYURETHANE

STEEL DISC

PAGE 116

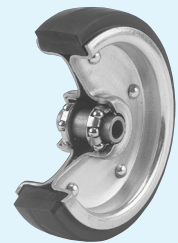
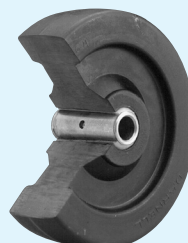
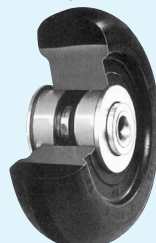
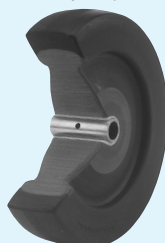
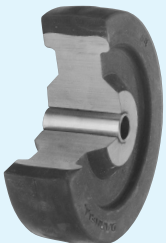
PAGE 114

PAGE 118

PAGE 122

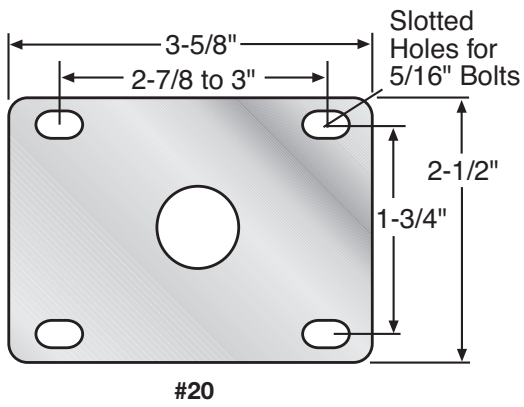
PAGE 120

PAGE 126

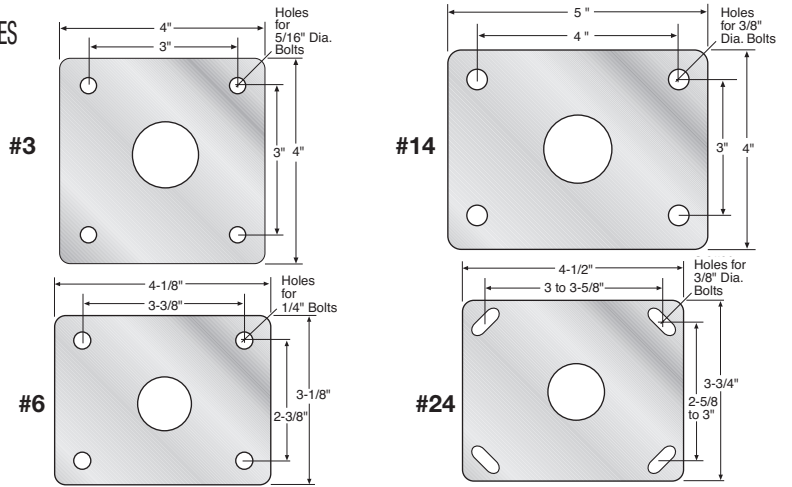


# TOP PLATE

## STANDARD

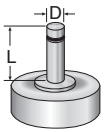


## ALTERNATES



## STEMS

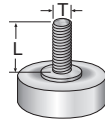
### "O" STEM TABLE



Dimension D	Dimension L	Stem Number
*1/2"	1-1/2"	O60-12-112
5/8"	2"	O60-58-2
*3/4"	2"	O60-34-2
7/8"	2"	O60-78-2
1"	2-1/2"	O60-1-212

Other stem sizes and dimensions available.  
\*Special Order/Minimum Quantity

### "L" STEM TABLE



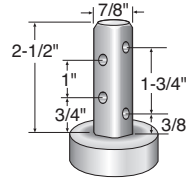
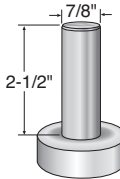
Dimension T	Dimension L	Stem Number
1/2"-13	1-1/2"	L60-1213-112
1/2"-13	2"	L60-1213-2
5/8"-11	2"	L60-5811-2
*5/8"-11	2-1/2"	L60-5811-212
3/4"-10	1-1/2"	L60-3410-112
3/4"-10	2"	L60-3410-2
3/4"-10	2-1/2"	L60-3410-212

Other stem sizes and dimensions available.  
\*Special Order/Minimum Quantity

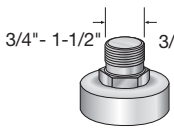
### "E" STEM TABLE

Dimension D	
ROUND	SQUARE
3/4"	3/4"
7/8"	7/8"
1"	1"
1-1/16"	1-1/8"
1-1/8"	1-1/4"
1-1/4"	1-3/8"
1-3/8"	1-1/2"
1-7/16"	1-5/8"
1-1/2"	1-3/4"
1-9/16"	2"
1-5/8"	
1-3/4"	
1-7/8"	
1.9"	

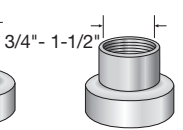
### "7/8" round" stem "7/8" square" stem



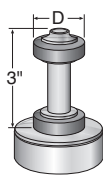
### "LP" stem



### "LPC" stem



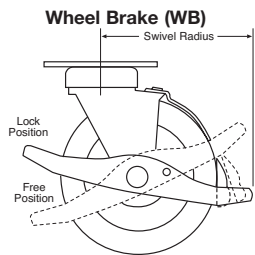
### "E" stem



For effective load height, subtract .187" from overall height for stem casters.

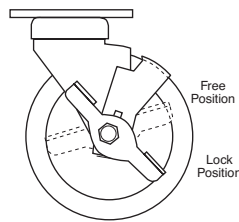


## BRAKES



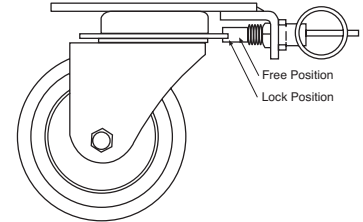
Operates by a foot pedal lever that has a rubber brake pad to form a positive brake action when the brake lever is pressed down to engage. To restore back to the normal position, simply reverse the action to disengage the brake. Easy to operate and trouble free. Not available in 2-1/2".

### Radial Brake (RB)



Available on Darnell-Rose's most popular Medium Duty Industrial Casters. Exceptional brake for light and medium duty applications, either industrial or institutional. Side pedal engages tread lock to restrain wheel movement. Brake kit available for field installation. Not available in 2-1/2", 5-1/2", 6" or 8".

### Four Position Swivel Lock (SL)



A horizontal four position swivel lock with a spring-loaded plunger to securely hold the swivel in the slotted position desired. Plunger can be put into a neutral position for free swiveling action.

### CAST IRON HUB

### POLYOLEFIN HUB

### MOLD-ON POLYURETHANE

### POLYURETHANE

### THERMO PLASTIC RUBBER

### PHENOLIC

### POLYOLEFIN

### CAST IRON

PAGE 136

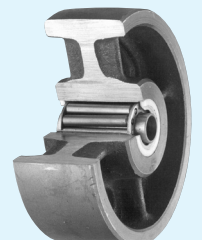
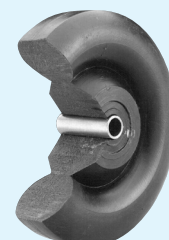
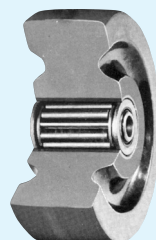
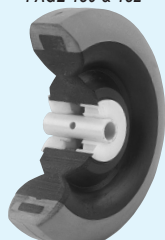
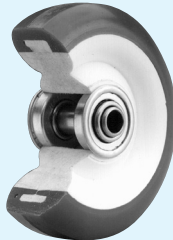
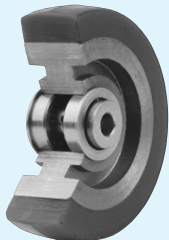
PAGE 134

PAGE 130 & 132

PAGE 142

PAGE 142

PAGE 146



# 60 SERIES *continued*

Diameter	Tread Width	Load Capacity	Wheel Material	Bearing	Swivel Part Number	Rigid Part Number	Approx. Weight	Overall Height	Swivel Radius		
<b>2 1/2</b>	<b>1 1/4</b>	<b>200</b>	NEOPRENE RUBBER	ACETAL	62 1/2-20-PDN	62 1/2-20-PRDN	2	3-3/4	2-3/8		
				BALL	62 1/2-20-XDN	62 1/2-20-XRDN					
		<b>250</b>	HI-CAP NEOPRENE	ACETAL	62 1/2-20-PKN	62 1/2-20-PRKN					
				BALL	62 1/2-20-XKN	62 1/2-20-XRKN					
		<b>300</b>	ADVANCED ELASTOMER	BALL	62 1/2-20-XAE	62 1/2-20-XRAE					
				DELTRIN	62 1/2-20-DAE	62 1/2-20-DRAE					
	<b>400</b>	CAST IRON	PLAIN	62 1/2-20-BCI	62 1/2-20-BRCI	2-1/2					
			HARD RUBBER	ACETAL	62 1/2-20-PH	62 1/2-20-PRH	2				
				BALL	62 1/2-20-XH	62 1/2-20-XRH					
				BALL	62 1/2-20-XADIMCI	62 1/2-20-XRADIMCI					
	<b>1 3/8</b>	EXTRA SOFT THERMO-PLASTIC RUBBER	<b>125</b>	BALL	62 1/2-20-XPDMPO55	62 1/2-20-XRPDMPO55	2				
				DELTRIN	62 1/2-20-DPDMPO55	62 1/2-20-DRPDMPO55					
			<b>200</b>	BALL	62 1/2-20-XPDMPO	62 1/2-20-XRPDMPO					
				DELTRIN	62 1/2-20-DPDMPO	62 1/2-20-DRPDMPO					
<b>225</b>			POLYOLEFIN	BALL	62 1/2-20-XPO	62 1/2-20-XRPO					
				PLAIN	62 1/2-20-BPO	62 1/2-20-BRPO					
<b>300</b>			POLYURETHANE / POLYOLEFIN HUB	BALL	62 1/2-20-XADIMPO	62 1/2-20-XRADIMPO					
				DELTRIN	62 1/2-20-DADIMPO	62 1/2-20-DRADIMPO					
<b>3</b>	<b>1 1/4</b>	<b>175</b>	EXTRA SOFT NEOPRENE	ACETAL	63-20-PEZNRD	63-20-PREZN	2-1/4	4-5/16	2-3/4		
				BALL	63-20-XEZNRD	63-20-XREZNRD					
		<b>200</b>	NEOPRENE RUBBER	ACETAL	63-20-PDN	63-20-PRDN					
				BALL	63-20-XDN	63-20-XRDN					
		<b>250</b>	HI-CAP NEOPRENE	ACETAL	63-20-PKN	63-20-PRKN					
				BALL	63-20-XKN	63-20-XRKN					
		<b>400</b>	ADVANCED ELASTOMER	BALL	63-20-XAE	63-20-XRAE					
				DELTRIN	63-20-DAE	63-20-DRAE					
				CAST IRON	BALL	63-20-XCI				63-20-XRCI	3
					PLAIN	63-20-BCI				63-20-BRCI	
	HARD RUBBER			ACETAL	63-20-PH	63-20-PRH	2-1/4				
				BALL	63-20-XH	63-20-XRH					
	PHENOLIC	ROLLER	63-20-TPR	63-20-TRPR							
	<b>1 3/8</b>	EXTRA SOFT THERMO-PLASTIC RUBBER	<b>150</b>	BALL	63-20-XPDMPO55	63-20-XRDMPO55	3				
				DELTRIN	63-20-DPDMPO55	63-20-DRPDMPO55					
			<b>225</b>	BALL	63-20-XPDMPO	63-20-XRPDMPO					
				DELTRIN	63-20-DPDMPO	63-20-DRPDMPO					
			<b>240</b>	POLYOLEFIN	PLAIN	63-20-BPO				63-20-BRPO	
BALL					63-20-XPO	63-20-XRPO					
<b>300</b>			POLYURETHANE / POLYOLEFIN HUB	BALL	63-20-XADIMPO	63-20-XRADIMPO					
				DELTRIN	63-20-DADIMPO	63-20-DRADIMPO					
<b>3 1/2</b>	<b>1 3/8</b>	<b>200</b>	STEEL DISC NEOPRENE	BALL	63 1/2-20-XDNTSD	63 1/2-20-XRDNTSD	2-1/4	4-3/4	3		
		<b>250</b>	STEEL DISC HI-CAP NEOPRENE	BALL	63 1/2-20-XKN-TSD	63 1/2-20-XRKN-TSD					
		<b>400</b>	STEEL DISC POLYURETHANE	BALL	63 1/2-20-XADITSD	63 1/2-20-XRADITSD					
	<b>1 1/4</b>	<b>200</b>	NEOPRENE RUBBER	ACETAL	63 1/2-20-PDN	63 1/2-20-PRDN	2-1/4				
				BALL	63 1/2-20-XDN	63 1/2-20-XRDN					
		<b>250</b>	HI-CAP NEOPRENE	ACETAL	63 1/2-20-PKN	63 1/2-20-PRKN					
				BALL	63 1/2-20-XKN	63 1/2-20-XRKN					
		<b>400</b>	ADVANCED ELASTOMER	BALL	63 1/2-20-XAE	63 1/2-20-XRAE	3-1/4				
				DELTRIN	63 1/2-20-DAE	63 1/2-20-DRAE					
				CAST IRON	PLAIN	63 1/2-20-BCI				63 1/2-20-BRCI	
				HARD RUBBER	ACETAL	63 1/2-20-PH	63 1/2-20-PRH			2-1/4	
					BALL	63 1/2-20-XH	63 1/2-20-XRH				
				PHENOLIC	ROLLER	63 1/2-20-TPR	63 1/2-20-TRPR				
				POLYURETHANE / CAST IRON HUB	BALL	63 1/2-20-XADIMCI	63 1/2-20-XRADIMCI			3-1/4	
PLAIN	63 1/2-20-BADIMCI	63 1/2-20-BRADIMCI									

# 60 Series

Diameter	Tread Width	Load Capacity	Wheel Material	Bearing	Swivel Part Number	Rigid Part Number	Approx. Weight	Overall Height	Swivel Radius	
<b>3 1/2</b>	<b>1 3/8</b>	<b>160</b>	EXTRA SOFT-55A THERMO-PLASTIC RUBBER	BALL	63 1/2-20-XPD-M-PO-55	63 1/2-20-XRPD-M-PO-55	3-1/4	4-3/4	3	
			DELTRIN	63 1/2-20-DPD-M-PO-55	63 1/2-20-DRPD-M-PO-55					
		<b>240</b>	THERMO-PLASTIC RUBBER	BALL	63 1/2-20-XPD-M-PO	63 1/2-20-XRPD-M-PO	2-1/4			
			DELTRIN	63 1/2-20-DPD-M-PO	63 1/2-20-DRPD-M-PO					
		<b>265</b>	POLYOLEFIN	PLAIN	63 1/2-20-BPO	63 1/2-20-BRPO	3-1/4			
		<b>300</b>	POLYOLEFIN	BALL	63 1/2-20-XPO	63 1/2-20-XRPO				
<b>360</b>	POLYURETHANE / POLYOLEFIN HUB	BALL	63 1/2-20-XADI-M-PO	63 1/2-20-XRADI-M-PO						
		DELTRIN	63 1/2-20-DADI-M-PO	63 1/2-20-DRADI-M-PO						
<b>4</b>	<b>1 1/8</b>	<b>200</b>	STEEL DISC NEOPRENE	BALL	64-20-XDN-T-SD	64-20-XRDN-T-SD	3-1/2	5-1/4	3-1/4	
			<b>250</b>	STEEL DISC HI-CAP NEOPRENE	BALL	64-20-XKN-T-SD				64-20-XRKN-T-SD
			<b>400</b>	STEEL DISC POLYURETHANE	BALL	64-20-XADI-T-SD				64-20-XRADI-T-SD
	<b>1 1/4</b>	<b>175</b>	EXTRA SOFT NEOPRENE	ACETAL	64-20-PEZN-RD	64-20-PREZN-RD	2-1/2			
			BALL	64-20-XEZN-RD	64-20-XREZN-RD					
		<b>200</b>	NEOPRENE RUBBER	ACETAL	64-20-PDN	64-20-PRDN				
			BALL	64-20-XDN	64-20-XRDN					
		ROUND DONUT / NEOPRENE	ACETAL	64-20-PDN-RD	64-20-PRDN-RD					
			BALL	64-20-XDN-RD	64-20-XRDN-RD					
		<b>250</b>	HI-CAP NEOPRENE	ACETAL	64-20-PKN	64-20-PRKN				
			BALL	64-20-XKN	64-20-XRKN					
		<b>400</b>	ADVANCED ELASTOMER	BALL	64-20-XAE	64-20-XRAE				
			DELTRIN	64-20-DAE	64-20-DRAE					
			CAST IRON	BALL	64-20-XCI	64-20-XRCI				
			PLAIN	64-20-BCI	64-20-BRCI					
	HARD RUBBER	ACETAL	64-20-PH	64-20-PRH						
		BALL	64-20-XH	64-20-XRH						
	PHENOLIC	ROLLER	64-20-TPR	64-20-TRPR						
	POLYURETHANE/CAST IRON HUB	BALL	64-20-XADI-M-CI	64-20-XRADI-M-CI						
	<b>1 3/8</b>	<b>170</b>	EXTRA SOFT-55A THERMO-PLASTIC RUBBER	BALL	64-20-XPD-M-PO-55	64-20-XRPD-M-PO-55	3-1/2			
			DELTRIN	64-20-DPD-M-PO-55	64-20-DRPD-M-PO-55					
		<b>250</b>	THERMO-PLASTIC RUBBER	BALL	64-20-XPD-M-PO	64-20-XRPD-M-PO	2-1/2			
			DELTRIN	64-20-DPD-M-PO	64-20-DRPD-M-PO					
		<b>375</b>	POLYOLEFIN	PLAIN	64-20-BPO	64-20-BRPO				
POLYOLEFIN			BALL	64-20-XPO	64-20-XRPO					
<b>400</b>	POLYURETHANE / POLYOLEFIN HUB	BALL	64-20-XADI-M-PO	64-20-XRADI-M-PO						
		DELTRIN	64-20-DADI-M-PO	64-20-DRADI-M-PO						
<b>5</b>	<b>1 1/8</b>	<b>200</b>	STEEL DISC NEOPRENE	BALL	65-20-XDN-T-SD	65-20-XRDN-T-SD	3-1/2	6-1/4	4-1/4	
			<b>250</b>	STEEL DISC HI-CAP NEOPRENE	BALL	65-20-XKN-T-SD				65-20-XRKN-T-SD
			<b>400</b>	STEEL DISC POLYURETHANE	BALL	65-20-XADI-T-SD				65-20-XRADI-T-SD
	<b>1 1/4</b>	<b>175</b>	EXTRA SOFT NEOPRENE	ACETAL	65-20-PEZN-RD	65-20-PREZN-RD	3			
			BALL	65-20-XEZN-RD	65-20-XREZN-RD					
		<b>200</b>	NEOPRENE RUBBER	ACETAL	65-20-PDN	65-20-PRDN				
			BALL	65-20-XDN	65-20-XRDN					
		<b>250</b>	HI-CAP NEOPRENE	ACETAL	65-20-PKN	65-20-PRKN				
			BALL	65-20-XKN	65-20-XRKN					
		<b>400</b>	ADVANCED ELASTOMER	BALL	65-20-XAE	65-20-XRAE				
			DELTRIN	65-20-DAE	65-20-DRAE					
			CAST IRON	BALL	65-20-XCI	65-20-XRCI				
			PLAIN	65-20-BCI	65-20-BRCI					
			HARD RUBBER	ACETAL	65-20-PH	65-20-PRH				
			BALL	65-20-XH	65-20-XRH					
	PHENOLIC	ROLLER	65-20-TPR	65-20-TRPR						
	POLYURETHANE/CAST IRON HUB	BALL	65-20-XADI-M-CI	65-20-XRADI-M-CI						
	<b>1 3/8</b>	<b>180</b>	EXTRA SOFT-55A THERMO-PLASTIC RUBBER	BALL	65-20-XPD-M-PO-55	65-20-XRPD-M-PO-55	4			
			DELTRIN	65-20-DPD-M-PO-55	65-20-DRPD-M-PO-55					
		<b>275</b>	THERMO-PLASTIC RUBBER	BALL	65-20-XPD-M-PO	65-20-XRPD-M-PO	3			
			DELTRIN	65-20-DPD-M-PO	65-20-DRPD-M-PO					
		<b>400</b>	POLYOLEFIN	BALL	65-20-XPO	65-20-XRPO				
			POLYURETHANE / POLYOLEFIN HUB	BALL	65-20-XADI-M-PO	65-20-XRADI-M-PO				
	DELTRIN	65-20-DADI-M-PO		65-20-DRADI-M-PO						
<b>400</b>	POLYOLEFIN	PLAIN	65-20-BPO	65-20-BRPO						
<b>5 1/2</b>	<b>1 1/2</b>	<b>200</b>	EXTRA SOFT NEOPRENE	BALL	65 1/2-20-XEZN-RD	65 1/2-20-XREZN-RD	3-1/2	6-7/8	4-3/4	

## 60 Series

Diameter	Tread Width	Load Capacity	Wheel Material	Bearing	Swivel Part Number	Rigid Part Number	Approx. Weight	Overall Height	Swivel Radius
6	1 1/8	200	STEEL DISC NEOPRENE	BALL	66-20-XDN-T-SD	66-20-XRDN-T-SD	4-1/4	7-3/8	5-1/4
		250	STEEL DISC HI-CAP NEOPRENE	BALL	66-20-XKN-T-SD	66-20-XRKN-T-SD			
		400	STEEL DISC POLYURETHANE	BALL	66-20-XADI-T-SD	66-20-XRADI-T-SD			
	1 1/4	200	EXTRA SOFT NEOPRENE	ACETAL	66-20-PEZN-RD	66-20-PREZN-RD	3-3/4		
			NEOPRENE RUBBER	ACETAL	66-20-PDN	66-20-PRDN			
		275	HI-CAP NEOPRENE	ACETAL	66-20-PKN	66-20-PRKN			
				BALL	66-20-XKN	66-20-XRKN			
		400	CAST IRON	BALL	66-20-XCI	66-20-XRCI			
				PLAIN	66-20-BCI	66-20-BRCI			
			HARD RUBBER	ACETAL	66-20-PH	66-20-PRH			
				BALL	66-20-XH	66-20-XRH			
			POLYURETHANE / CAST IRON HUB	BALL	66-20-XADI-M-CI	66-20-XRADI-M-CI	4-1/2		
			1 3/8	190	EXTRA SOFT-55A	BALL	66-20-XPDM-PO-55		
	THERMO-PLASTIC RUBBER	DELTRIN			66-20-DPDM-PO-55	66-20-DRPDM-PO-55			
	300	THERMO-PLASTIC RUBBER		BALL	66-20-XPDM-PO	66-20-XRPDM-PO			
				DELTRIN	66-20-DPDM-PO	66-20-DRPDM-PO			
	400	POLYOLEFIN		BALL	66-20-XPO	66-20-XRPO			
				PLAIN	66-20-BPO	66-20-BRPO			
	POLYURETHANE / POLYOLEFIN HUB	BALL	66-20-XADI-M-PO	66-20-XRADI-M-PO					
	DELTRIN	66-20-DADI-M-PO	66-20-DRADI-M-PO						
	8	1 1/16	200	EXTRA SOFT NEOPRENE	BALL	68-20-XEZNRD	68-20-XREZNRD		

# 60

## SERIES

# Stainless Steel



Designed to provide the ultimate

### CORROSION PROTECTION

These casters are ideally suited for acetic, nitric and citric acid environments in addition to being well suited for organic and inorganic chemicals, dye stuffs, crude and refined oil environments. Widely accepted in the following industries:

- **DAIRY**
- **FOOD PROCESSING**
- **HOSPITALS & MEDICAL**
- **BEVERAGE**
- **PHARMACEUTICALS**
- **ANIMAL CAGES**

Made with non-magnetic, 303/304 stainless steel.

## 60 Series Stainless Steel

Diameter	Tread Width	Load Capacity	Wheel Material	Bearing	Swivel Part Number	Rigid Part Number	Approx. Weight	Overall Height	Swivel Radius	
		LBS					LBS			
<b>2 1/2</b>	<b>1 1/4</b>	<b>200</b>	NEOPRENE RUBBER	ACETAL	62 1/2-20-PDN-SS	62 1/2-20-PRDN-SS	2	3-3/4	2-3/8	
		<b>400</b>	HARD RUBBER	ACETAL	62 1/2-20-PH-SS	62 1/2-20-PRH-SS	3-1/2			
			STAINLESS STEEL	PLAIN	62 1/2-20-BSS-SS	62 1/2-20-BRSS-SS				
	<b>1 3/8</b>	<b>125</b>	EXTRA SOFT THERMO-PLASTIC RUBBER	DELIRIN	62 1/2-20-DPD-M-P0-55-SS	62 1/2-20-DRPD-M-P0-55-SS	2			
		<b>200</b>	THERMO-PLASTIC RUBBER	DELIRIN	62 1/2-20-DPD-M-P0-SS	62 1/2-20-DRPD-M-P0-SS				
		<b>225</b>	POLYOLEFIN	PLAIN	62 1/2-20-BPO-SS	62 1/2-20-BRPO-SS				
		<b>400</b>	ADVANCED ELASTOMER	DELIRIN	62 1/2-20-DAE-SS	62 1/2-20-DRAE				
	<b>400</b>	POLYURETHANE / POLYOLEFIN HUB	DELIRIN	62 1/2-20-DADI-M-P0-SS	62 1/2-20-DRADI-M-P0-SS					
<b>3</b>	<b>1 1/4</b>	<b>175</b>	EXTRA SOFT NEOPRENE	ACETAL	63-20-PEZN-RD-SS	63-20-PREZN-RD-SS	2-1/4	4-15/16	2-3/4	
		<b>200</b>	NEOPRENE RUBBER	ACETAL	63-20-PDN-SS	63-20-PRDN-SS		4-5/16		
		<b>400</b>	ADVANCED ELASTOMER	DELIRIN	63-20-DAE-SS	63-20-DRAE-SS		4-15/16		
			HARD RUBBER	ACETAL	63-20-PH-SS	63-20-PRH-SS		4-5/16		
			PHENOLIC	ROLLER	63-20-TPR-SS	63-20-TRPR-SS				
		<b>400</b>	STAINLESS STEEL	PLAIN	63-20-BSS-SS	63-20-BRSS-SS	4-1/2			
	<b>1 3/8</b>	<b>150</b>	EXTRA SOFT THERMO-PLASTIC RUBBER	DELIRIN	63-20-DPD-M-P0-55-SS	63-20-DRPD-M-P0-55-SS	3	4-5/16		
		<b>225</b>	THERMO-PLASTIC RUBBER	DELIRIN	63-20-DPD-M-P0-SS	63-20-DRPD-M-P0-SS		4-15/16		
		<b>240</b>	POLYOLEFIN	PLAIN	63-20-BPO-SS	63-20-BRPO-SS				
		<b>300</b>	POLYURETHANE / POLYOLEFIN HUB	DELIRIN	63-20-DADI-M-P0-SS	63-20-DRADI-M-P0-SS				
		<b>300</b>	POLYURETHANE / POLYOLEFIN HUB	DELIRIN	63-20-DADI-M-P0-SS	63-20-DRADI-M-P0-SS				
<b>3 1/2</b>	<b>1 1/4</b>	<b>200</b>	NEOPRENE RUBBER	ACETAL	63 1/2-20-PDN-SS	63 1/2-20-PRDN-SS	2-1/4	4-3/4	3	
		<b>250</b>	HI-CAP NEOPRENE	ACETAL	63 1/2-20-PKN-SS	63 1/2-20-PRKN-SS	3-1/4			
		<b>400</b>	ADVANCED ELASTOMER	DELIRIN	63 1/2-20-DAE-SS	63 1/2-20-DRAE-SS				2-1/4
			HARD RUBBER	ACETAL	63 1/2-20-PH-SS	63 1/2-20-PRH-SS	2-1/4			
			PHENOLIC	ROLLER	63 1/2-20-TPR-SS	63 1/2-20-TRPR-SS	3			
		<b>400</b>	STAINLESS STEEL	PLAIN	63 1/2-20-BSS-SS	63 1/2-20-BRSS-SS	5-5/8			
	<b>1 3/8</b>	<b>160</b>	EXTRA SOFT THERMO-PLASTIC RUBBER	DELIRIN	63 1/2-20-DPD-M-P0-55-SS	63 1/2-20-DRPD-M-P0-55-SS	3-1/4			
		<b>240</b>	THERMO-PLASTIC RUBBER	DELIRIN	63 1/2-20-DPD-M-P0-SS	63 1/2-20-DRPD-M-P0-SS	2-1/4			
		<b>265</b>	POLYOLEFIN	PLAIN	63 1/2-20-BPO-SS	63 1/2-20-BRPO-SS				
		<b>360</b>	POLYURETHANE / POLYOLEFIN HUB	DELIRIN	63 1/2-20-DADI-M-P0-SS	63 1/2-20-DRADI-M-P0-SS	3-1/4			
		<b>360</b>	POLYURETHANE / POLYOLEFIN HUB	DELIRIN	63 1/2-20-DADI-M-P0-SS	63 1/2-20-DRADI-M-P0-SS				
<b>4</b>	<b>1 1/4</b>	<b>175</b>	EXTRA SOFT NEOPRENE	ACETAL	64-20-PEZN-RD-SS	64-20-PREZN-RD-SS	2-1/2	5-1/4	3-1/4	
		<b>200</b>	NEOPRENE RUBBER	ACETAL	64-20-PDN-SS	64-20-PRDN-SS				
		<b>250</b>	HI-CAP NEOPRENE	ACETAL	64-20-PKN-SS	64-20-PRKN-SS				3-1/4
		<b>400</b>	ADVANCED ELASTOMER	DELIRIN	64-20-DAE-SS	64-20-DRAE-SS				
			HARD RUBBER	ACETAL	64-20-PH-SS	64-20-PRH-SS				
	PHENOLIC		ROLLER	64-20-TPR-SS	64-20-TRPR-SS					
		<b>400</b>	STAINLESS STEEL	PLAIN	64-20-BSS-SS	64-20-BRSS-SS				
	<b>1 3/8</b>	<b>170</b>	EXTRA SOFT THERMO-PLASTIC RUBBER	DELIRIN	64-20-DPD-M-P0-55-SS	64-20-DRPD-M-P0-55-SS	3-1/2			
		<b>250</b>	THERMO-PLASTIC RUBBER	DELIRIN	64-20-DPD-M-P0-SS	64-20-DRPD-M-P0-SS	2-1/2			
		<b>375</b>	POLYOLEFIN	PLAIN	64-20-BPO-SS	64-20-BRPO-SS				
<b>400</b>		POLYURETHANE / POLYOLEFIN HUB	DELIRIN	64-20-DADI-M-P0-SS	64-20-DRADI-M-P0-SS	3-1/2				
		<b>400</b>	POLYURETHANE / POLYOLEFIN HUB	DELIRIN	64-20-DADI-M-P0-SS	64-20-DRADI-M-P0-SS				
<b>5</b>	<b>1 1/4</b>	<b>200</b>	NEOPRENE RUBBER	ACETAL	65-20-PDN-SS	64-20-PRDN-SS	3	6-1/4	4-3/4	
		<b>250</b>	HI-CAP NEOPRENE	ACETAL	65-20-PKN-SS	65-20-PRKN-SS	3-1/2			
		<b>400</b>	ADVANCED ELASTOMER	DELIRIN	65-20-DAE-SS	65-20-DRAE-SS				3
			HARD RUBBER	ACETAL	65-20-PH-SS	65-20-PRH-SS	11-1/2			
			PHENOLIC	ROLLER	65-20-TPR-SS	65-20-TRPR-SS				
		<b>400</b>	STAINLESS STEEL	PLAIN	65-20-BSS-SS	65-20-BRSS-SS				
	<b>1 3/8</b>	<b>180</b>	EXTRA SOFT THERMO-PLASTIC RUBBER	DELIRIN	65-20-DPD-M-P0-55-SS	65-20-DRPD-M-P0-55-SS	4		4-1/4	
		<b>275</b>	THERMO-PLASTIC RUBBER	DELIRIN	65-20-DPD-M-P0-SS	65-20-DRPD-M-P0-SS			4-1/4	
		<b>400</b>	POLYURETHANE / POLYOLEFIN HUB	DELIRIN	65-20-DADI-M-P0-SS	65-20-DRADI-M-P0-SS	3-1/2		4-1/4	
		<b>440</b>	POLYOLEFIN	PLAIN	65-20-BPO-SS	65-20-BRPO-SS	3		4-3/4	
		<b>440</b>	POLYOLEFIN	PLAIN	65-20-BPO-SS	65-20-BRPO-SS				
<b>6</b>	<b>1 1/4</b>	<b>200</b>	NEOPRENE RUBBER	ACETAL	66-20-PDN-SS	66-20-PRDN-SS	4-1/2	7-3/8	5-1/4	
		<b>275</b>	HI-CAP NEOPRENE	ACETAL	66-20-PKN-SS	66-20-PRKN-SS				
		<b>400</b>	HARD RUBBER	ACETAL	66-20-PH-SS	66-20-PRH-SS				
	<b>1 3/8</b>	<b>190</b>	EXTRA SOFT THERMO-PLASTIC RUBBER	DELIRIN	66-20-DPD-M-P0-55-SS	66-20-DRPD-M-P0-55-SS				
		<b>300</b>	THERMO-PLASTIC RUBBER	DELIRIN	66-20-DPD-M-P0-SS	66-20-DRPD-M-P0-SS				
			<b>400</b>	POLYOLEFIN	PLAIN	66-20-BPO-SS				66-20-BRPO-SS
			<b>400</b>	POLYURETHANE / POLYOLEFIN HUB	DELIRIN	66-20-DADI-M-P0-SS				66-20-DRADI-M-P0-SS