

SERIES

Medium-Heavy Duty Industrial

Load Capacity: 350 to 1000 lbs.

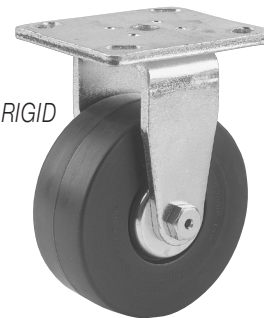
Quality Features

- **FOUR-SIDED, DOUBLE BALL RACEWAY.**
Hardened steel ball bearings in the load bearing and secondary thrust bearings touch the swivel raceway "on all four sides." This protects the central king pin from shock loading for free swiveling under heavy loads.
- **HEAT-TREATED MOVING PARTS.**
All moving parts are heat treated to a precise molecular depth and Rockwell hardness. This extends caster life under rugged conditions and shock loads.
- **TWO-PIECE RIGID CASTER.**
Rigid caster utilizes a welded top plate and yoke design instead of a one-piece stamped yoke as used on competitive brands.
- **THREAD GUARDS.**
Available on most wheels, keeps unwanted materials out of the wheel bearings thus increasing the life of the caster.

SWIVEL



RIGID



The 80 Series is one of the finest Medium-Heavy Duty casters around. The smooth, quiet swivel raceway allows use not only for industrial applications, but with proper wheel and tread selection, it can be used for hospital and institutional service as well.

Typical applications include:

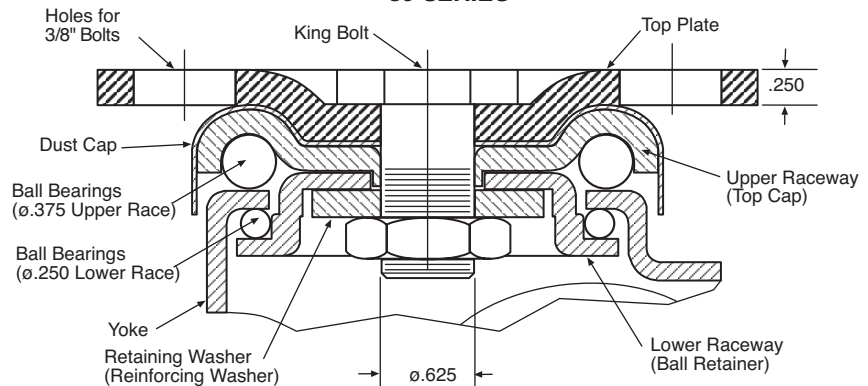
- Platform Trucks
- Luggage Carts
- Computer Frames
- Storage Containers
- Manual Lift Trucks
- Mobile Cabinets

Formed steel construction makes this a tough and durable caster that provides a clean look and smooth ride. Standard finish is Zinc Plated Steel; custom finishes available.

Options

- Cart Washable Grease Seals
- Maintenance Free Swivel Bearings
- High-Temperature Wheels
- Conductive or Static-Dissipative Wheels
- Gray, Non-Marking Wheels
- Powder Coated Finishes

FOUR SIDED DOUBLE BALL BEARING RACEWAY 80 SERIES



Wheel Selection

ADVANCED ELASTOMER

NEOPRENE RUBBER

HI-CAP NEOPRENE

HARD RUBBER

NEOPRENE OR POLYURETHANE

STEEL DISC

CAST IRON HUB

MOLD-ON POLYURETHANE

PAGE 114

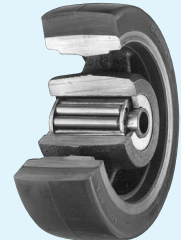
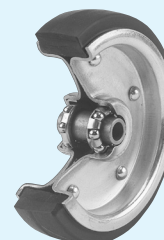
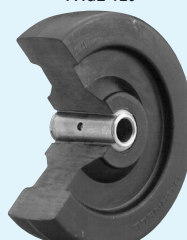
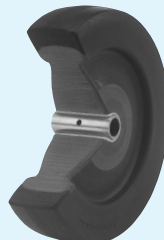
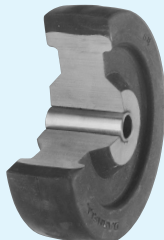
PAGE 116

PAGE 118

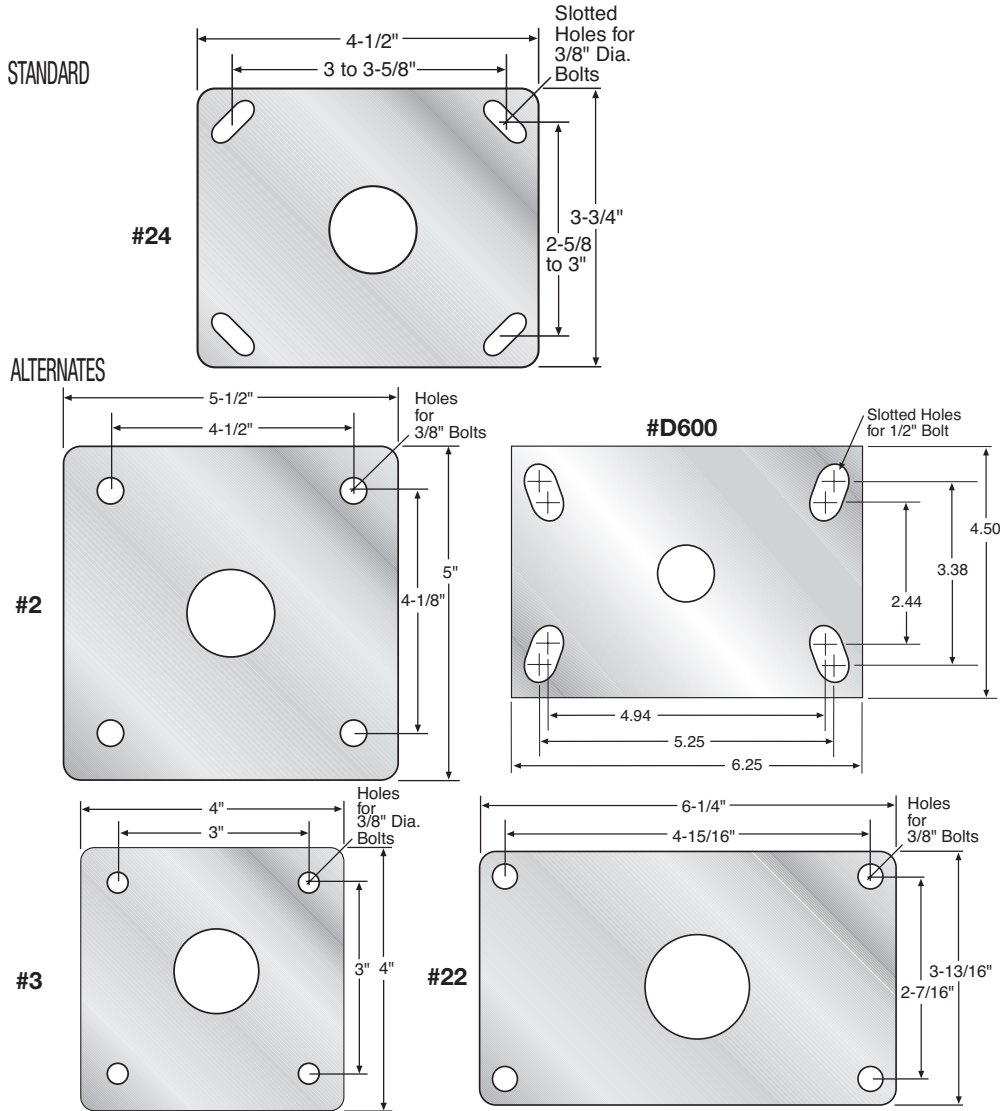
PAGE 120

PAGE 126

PAGE 136



TOP PLATE

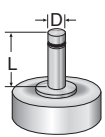


**Medium-Heavy
Duty Industrial**



STEMS

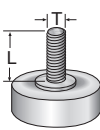
"O" STEM TABLE



Dimension D	Dimension L	Stem Number
*5/8"	2"	O80-58-2
*3/4"	2"	O80-34-2
*7/8"	2"	O80-78-2
1"	2-1/2"	O80-1-212

Other stem sizes and dimensions available.
*Special Order/Minimum Quantity

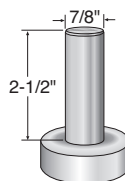
"L" STEM TABLE



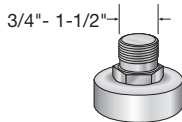
Dimension T	Dimension L	Stem Number
5/8"-11	2-1/2"	L80-5811-212
3/4"-10	2-1/2"	L80-3410-212
*7/8"-9	2-1/2"	L80-789-212
*1"-8	2-1/2"	L80-18-212

Other stem sizes and dimensions available.
*Special Order/Minimum Quantity

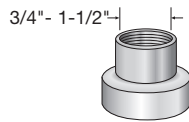
****7/8" round" stem**



"LP" stem



"LPC" stem

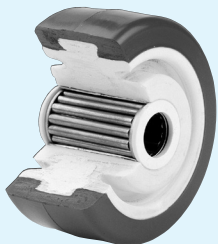


For effective load height, subtract .250" from overall height for stem casters.

POLYOLEFIN HUB

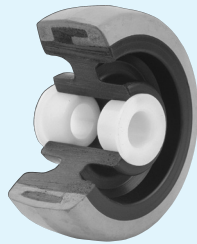
POLYURETHANE

PAGE 124



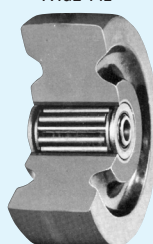
THERMO PLASTIC RUBBER

PAGE 130



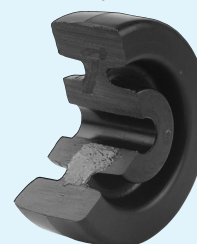
PHENOLIC

PAGE 142



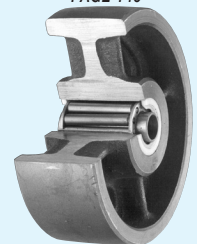
POLYOLEFIN

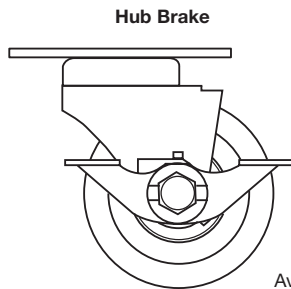
PAGE 144



CAST IRON

PAGE 146

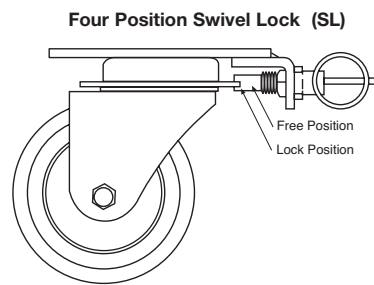




Available in 4", 5", 6", & 8"

Hub Brake

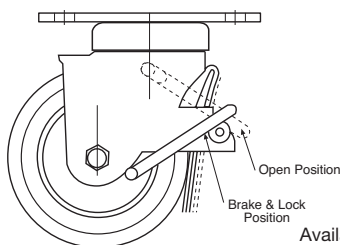
Prevents wheel movement by engaging fork legs against wheel hub when foot pedal is applied in the locked position.



Four Position Swivel Lock

A horizontal four position swivel lock with a springloaded plunger to securely hold the swivel in the slotted position desired. Plunger can be put into a neutral position for free swiveling action.

Heavy Duty Combination Swivel & Wheel Brake (CB)

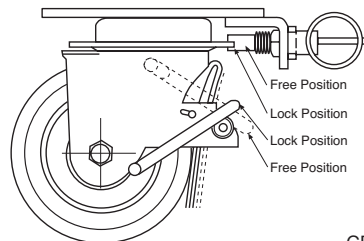


Available in 5", 6", & 8"

Heavy Duty Combination Swivel & Wheel Brake

This combination swivel and wheel brake was especially designed for heavy equipment that must be made immobile. The wheel brake is constructed to operate in conjunction with the swivel. The overall height of this caster with the brake applied or released remains the same, even when used with companion casters as a swivel or rigid.

Combination Four Position Swivel Lock & Wheel Brake (WB-SL)



CB Available in 5", 6", & 8"

Combination Four Position Swivel Lock & Wheel Brake

This combination horizontal four position swivel lock and wheel brake was designed to work together or operate independent from one another. Both the swivel lock plunger and the wheel brake operate from a spring steel action to assure a positive operation.

Diameter	Tread Width	Load Capacity	Wheel Material	Bearing	Swivel Part Number	Rigid Part Number	Approx. Weight	Overall Height	Swivel Radius	
3	1 13/16	500	POLYOLEFIN	ROLLER	83-24-TPO	83-24-TRPO	4-1/2	4-1/2	2-5/8	
			NEOPRENE RUBBER	ROLLER	83-24-TDN	83-24-TRDN	5			
		440	HI-CAP NEOPRENE	ROLLER	83-24-TKN	83-24-TRKN	5-1/2			
			HARD RUBBER	ROLLER	83-24-TH	83-24-TRH				
		800	POLYURETHANE / CAST IRON HUB	ROLLER	83-24-TADI-M-CI	83-24-TRADI-M-CI	5			
			ADVANCED ELASTOMER	DELIRIN	83-24-DAE	83-24-DRAE				
	900	CAST IRON		PRECISION BALL	83-24-PXAE	83-24-PXRAE	5-1/2			
			ROLLER	83-24-TAE	83-24-TRAЕ					
	1000	PHENOLIC	ROLLER	83-24-TCI	83-24-TRCI	5				
			ROLLER	83-24-TPR	83-24-TRPR					
	4	2	200	EXTRA SOFT THERMO-PLASTIC RUBBER	DELIRIN	84-24-DPD-M-P0-55	84-24-DRPD-M-P0-55	7	5-15/16	3
				ROLLER	84-24-TPD-M-P0-55	84-24-TRPD-M-P0-55				
350			NEOPRENE RUBBER	ROLLER	84-24-TDN	84-24-TRDN				
			THIERMO-PLASTIC RUBBER	DELIRIN	84-24-DPD-M-PO	84-24-DRPD-M-PO				
410			HI-CAP NEOPRENE	ROLLER	84-24-TPD-M-PO	84-24-TRPD-M-PO				
				ROLLER	84-24-TKN	84-24-TRKN				
600			POLYURETHANE / POLYOLEFIN HUB	DELIRIN	84-24-DADI-M-PO	84-24-DRADI-M-PO				
			POLYOLEFIN	ROLLER	84-24-TPO	84-24-TRPO				
700			POLYURETHANE / POLYOLEFIN HUB	ROLLER	84-24-TADI-M-PO	84-24-TRADI-M-PO				
			HARD RUBBER	ROLLER	84-24-TH	84-24-TRH				
750			POLYURETHANE / CAST IRON HUB	ROLLER	84-24-TADI-M-CI	84-24-TRADI-M-CI	8-3/4			
				ROLLER	84-24-TPR	84-24-TRPR				
1000			ADVANCED ELASTOMER	BALL	84-24-XAE	84-24-XRAE	6-1/2			
				DELIRIN	84-24-DAE	84-24-DRAE				
				PRECISION BALL	84-24-PXAE	84-24-PXRAE				
	ROLLER	84-24-TAE		84-24-TRAЕ						
	ROLLER	84-24-TCI		84-24-TRCI						
8-3/4	CAST IRON	ROLLER	84-24-TCI	84-24-TRCI	7					
	PHENOLIC	ROLLER	84-24-TPR	84-24-TRPR						

All single wheel loads are based on 3 mph for less than 10 minutes continuous running.

80 Series continued

Diameter	Tread Width	Load Capacity	Wheel Material	Bearing	Swivel Part Number	Rigid Part Number	Approx. Weight	Overall Height	Swivel Radius
5	1 9/16	550	STEEL DISC POLYURETHANE	ROLLER	85-24-TADI-T-SD	85-24-TRADI-T-SD	7	6-5/8	4-1/8
		225	EXTRA SOFT THERMO-PLASTIC RUBBER	DELRIN	85-24-DPD-M-PO-55	85-24-DRPD-M-PO-55			
	350	NEOPRENE RUBBER	ROLLER	85-24-TPD-M-PO-55	85-24-TRPD-M-PO-55				
		STEEL DISC NEOPRENE	ROLLER	85-24-TDN	85-24-TRDN				
	440	HI-CAP NEOPRENE	ROLLER	85-24-TDN-T-SD	85-24-TRDN-T-SD				
		STEEL DISC HI-CAP NEOPRENE	ROLLER	85-24-TKN	85-24-TRKN				
	800	THERMO-PLASTIC RUBBER	ROLLER	85-24-TKN-T-SD	85-24-TRKN-T-SD				
		HARD RUBBER	DELRIN	85-24-DPD-M-PO	85-24-DRPD-M-PO				
	900	POLYURETHANE / CAST IRON HUB	ROLLER	85-24-TPD-M-PO	85-24-TRPD-M-PO				
		POLYURETHANE / POLYOLEFIN HUB	ROLLER	85-24-TH	85-24-TRH				
	1000	ADVANCED ELASTOMER	ROLLER	85-24-TPO	85-24-TRPO				
		CAST IRON	ROLLER	85-24-TADI-M-CI	85-24-TRADI-M-CI				
		PHENOLIC	TAPERED ROLLER	85-24-YADI-M-CI	85-24-YRADI-M-CI				
		ADVANCED ELASTOMER	DELRIN	85-24-DADI-M-PO	85-24-DRADI-M-PO				
		CAST IRON	ROLLER	85-24-TADI-M-PO	85-24-TRADI-M-PO				
		PHENOLIC	BALL	85-24-XAE	85-24-XRAE				
6	1 9/16	550	STEEL DISC POLYURETHANE	ROLLER	86-24-TADI-T-SD	86-24-TRADI-T-SD	7-3/4	7-1/2	4-5/8
		250	EXTRA SOFT THERMO-PLASTIC RUBBER	DELRIN	86-24-DPD-M-PO-55	86-24-DRPD-M-PO-55			
	350	STEEL DISC NEOPRENE	ROLLER	86-24-TPD-M-PO-55	86-24-TRPD-M-PO-55				
	400	NEOPRENE RUBBER	ROLLER	86-24-TDN	86-24-TRDN				
	440	STEEL DISC HI-CAP NEOPRENE	ROLLER	86-24-TDN-T-SD	86-24-TRDN-T-SD				
		THERMO-PLASTIC RUBBER	ROLLER	86-24-TKN	86-24-TRKN				
	500	HI-CAP NEOPRENE	ROLLER	86-24-DPD-M-PO	86-24-DRPD-M-PO				
	800	HARD RUBBER	ROLLER	86-24-TPD-M-PO	86-24-TRPD-M-PO				
		POLYURETHANE / CAST IRON HUB	ROLLER	86-24-TKN	86-24-TRKN				
	840	POLYOLEFIN	ROLLER	86-24-TH	86-24-TRH				
	900	POLYURETHANE / POLYOLEFIN HUB	ROLLER	86-24-TPO	86-24-TRPO				
		ADVANCED ELASTOMER	DELRIN	86-24-TADI-M-CI	86-24-TRADI-M-CI				
	1000	ADVANCED ELASTOMER	ROLLER	86-24-DADI-M-PO	86-24-DRADI-M-PO				
		ADVANCED ELASTOMER	ROLLER	86-24-TADI-M-PO	86-24-TRADI-M-PO				
		ADVANCED ELASTOMER	BALL	86-24-XAE	86-24-XRAE				
		ADVANCED ELASTOMER	DELRIN	86-24-DAE	86-24-DRAE				
CAST IRON		PRECISION BALL	86-24-PXAE	86-24-PXRAE					
PHENOLIC		ROLLER	86-24-TAE	86-24-TRAE					
8	2	300	EXTRA SOFT THERMO-PLASTIC RUBBER	DELRIN	88-24-DPD-M-PO-55	88-24-DRPD-M-PO-55	9-3/4	9-3/4	5-3/4
		410	THERMO-PLASTIC RUBBER	ROLLER	88-24-TPD-M-PO-55	88-24-TRPD-M-PO-55			
	475	THERMO-PLASTIC RUBBER	DELRIN	88-24-DPD-M-PO	88-24-DRPD-M-PO				
	800	NEOPRENE RUBBER	ROLLER	88-24-TPD-M-PO	88-24-TRPD-M-PO				
		HARD RUBBER	ROLLER	88-24-TDN	88-24-TRDN				
	900	POLYURETHANE / CAST IRON HUB	ROLLER	88-24-TH	88-24-TRH				
		POLYURETHANE / POLYOLEFIN HUB	ROLLER	88-24-TADI-M-CI	88-24-TRADI-M-CI				
	1000	POLYOLEFIN	ROLLER	88-24-TADI-M-CI	88-24-TRADI-M-CI				
		CAST IRON	ROLLER	88-24-TPO	88-24-TRPO				
	1200	PHENOLIC	ROLLER	88-24-TAE	88-24-TRAE				
		ADVANCED ELASTOMER	ROLLER	88-24-TCI	88-24-TRCI				

All single wheel loads are based on 3 mph for less than 10 minutes continuous running.