

# 30

# SERIES

Dual-Wheel Industrial

Load Capacity: 200 to 400 lbs.

## Quality Features

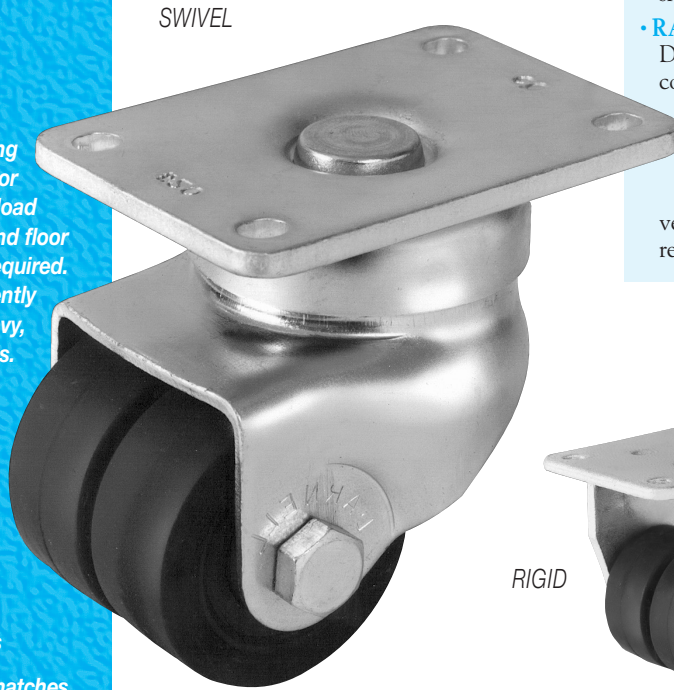
- **FOUR-SIDED, DOUBLE BALL RACEWAY.**  
Hardened steel ball bearings touch upper and lower swivel raceway "on all four sides." This protects the pin from shock loading for free swiveling under heavy loads.
- **HEAT-TREATED MOVING PARTS.**  
All moving parts are hardened to a precise molecular depth and Rockwell hardness. This extends caster life under rugged conditions and shock loads.
- **RACEWAY DUST CAP.**  
Dust cap protects the raceway from contamination by dust, dirt, moisture, and other environmental debris.
- **LOW OVERALL HEIGHT.**  
Heavy loads are supported by two wheels that roll independently to assure easy maneuverability in applications where a low profile is required.

An exceptionally strong dual-wheel caster for applications where heavy load capacity, low overall height, and floor or carpet protection is required. Each wheel rolls independently for easy swiveling under heavy, low profile loads.

Used extensively on:

- Computer Frames
- Electronic Enclosures
- Copy Machines
- Disk Storage Devices
- Display Racks
- Airport Terminal Stands

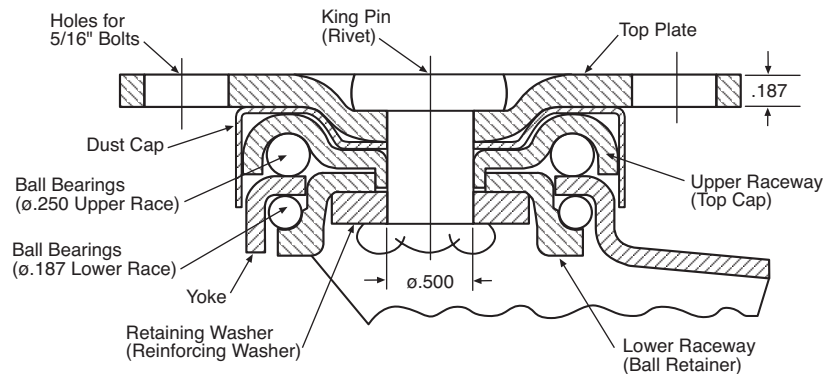
No other low profile caster matches the strength and performance of the 30 series. Available in either standard bright zinc or optional black oxide finishes.



## Options

- Thumb-Style Wheel Brake
- Conductive or Static-Dissipative Wheels
- Gray, Non-Marking Wheels
- Power Coated or Black Oxide Finishes
- Maintenance-Free Swivel Bearings

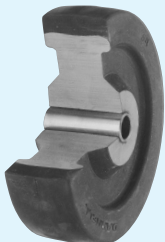
### FOUR SIDED DOUBLE BALL BEARING RACEWAY 30 SERIES



## Wheel Selection

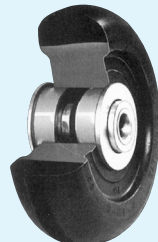
### NEOPRENE RUBBER

PAGE 116



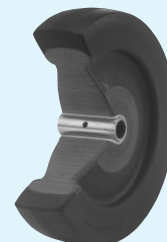
### DONUT-STYLE NEOPRENE

PAGE 122

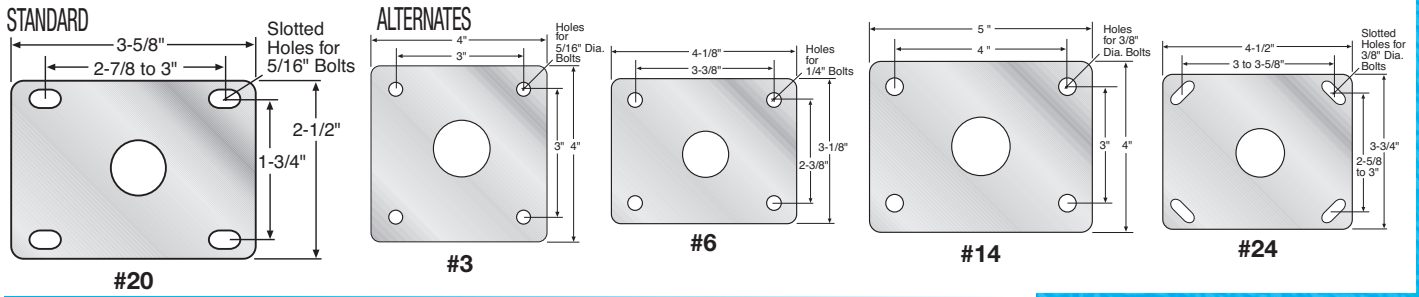


### HI-CAP NEOPRENE

PAGE 118

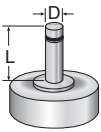


## TOP PLATE



## STEMS

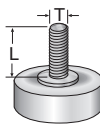
### "O" STEM TABLE



Dimension D	Dimension L	Stem Number
*1/2"	1-1/2"	O-12-112
5/8"	2"	O-58-2
*3/4"	2"	O-34-2
7/8"	2"	O-78-2
1"	2-1/2"	O-1-212

Other stem sizes and dimensions available.  
\*Special Order/Minimum Quantity

### "L" STEM TABLE



Dimension T	Dimension L	Stem Number
1/2"-13	1-1/2"	L-1213-112
1/2"-13	2"	L-1213-2
5/8"-11	2"	L-5811-2
*5/8"-11	2-1/2"	L-5811-212
3/4"-10	1-1/2"	L-3410-112
3/4"-10	2"	L-3410-2
3/4"-10	2-1/2"	L-3410-212

Other stem sizes and dimensions available.  
\*Special Order/Minimum Quantity

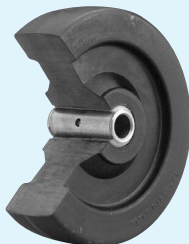
For effective load height, subtract .187" from overall height for stem casters.

Diameter	Tread Width	Load Capacity	Wheel Material	Bearing	Swivel Part Number	Rigid Part Number	Approx. Weight	Overall Height	Swivel Radius	
2	7/8	250	ROUND DONUT / NEOPRENE	BALL	32-20-XDN-RD	32-20-XRDN-RD	2	3-1/4	2-1/4	
			NEOPRENE RUBBER	BALL	32-20-XDN	32-20-XRDN				
			HARD RUBBER	BALL	32-20-XH	32-20-XRH				
			HI-CAP NEOPRENE	BALL	32-20-XKN	32-20-XRKN				
2 1/2	7/8	300	NEOPRENE RUBBER	BALL	32 1/2-20-XDN	32 1/2-20-XRDN	2-1/2	3-3/4	2-5/8	
			HARD RUBBER	BALL	32 1/2-20-XH	32 1/2-20-XRH				
			HI-CAP NEOPRENE	BALL	32 1/2-20-XKN	32 1/2-20-XRKN				
		400	POLYURETHANE / CAST IRON HUB	BALL	32 1/2-20-XADI-M-CI	32 1/2-20-XRADI-M-CI	4			
3*	7/8	400	ADVANCED ELASTOMER	BALL	32 1/2-20-XAE	32 1/2-20-XRAE	2-1/2	4-3/4	3	
			220	EXTRA SOFT NEOPRENE	ACETAL	33-20-PEZN-RD	33-20-PREZN-RD			2-3/4
				BALL	33-20-XEZN-RD	33-20-XREZN-RD				
			250	NEOPRENE RUBBER	ACETAL	33-20-PDN	33-20-PRDN			3
				BALL	33-20-XDN	33-20-XRDN				
33-20-PH	33-20-PRH									
375	HARD RUBBER	BALL	33-20-XH	33-20-XRH	3					
	ACETAL	33-20-PKN	33-20-PRKN							
	BALL	33-20-XKN	33-20-XRKN							
4*	7/8	400	EXTRA SOFT NEOPRENE	ACETAL	34-20-PEZN-RD	34-20-PREZN-RD	3	5-1/4	3-1/2	
			BALL	34-20-XEZN-RD	34-20-XREZN-RD					
			NEOPRENE RUBBER	ACETAL	34-20-PDN	34-20-PRDN				
			BALL	34-20-XDN	34-20-XRDN					
			34-20-PH	34-20-PRH						
375	HI-CAP NEOPRENE	ACETAL	34-20-PKN	34-20-PRKN	3					
BALL	34-20-XKN	34-20-XRKN								
5*	7/8	400	EXTRA SOFT NEOPRENE	ACETAL	35-20-PEZN-RD	35-20-PREZN-RD	3-1/4	6-1/4	4	
			BALL	35-20-XEZN-RD	35-20-XREZN-RD					
			NEOPRENE RUBBER	ACETAL	35-20-PDN	35-20-PRDN				
			BALL	35-20-XDN	35-20-XRDN					
			35-20-PH	35-20-PRH						
375	HI-CAP NEOPRENE	ACETAL	35-20-PKN	35-20-PRKN	3-1/4					
BALL	35-20-XKN	35-20-XRKN								
400	HARD RUBBER	ACETAL	35-20-PH	35-20-PRH						

\*Special Order / Minimum Quantity

### HARD RUBBER

PAGE 120



### POLYURETHANE/CAST IRON

PAGE 136

