

# CARTMASTER FAA-PMA PQ2208NM

for Inflight Trolleys

## Can Your Airline Cart Caster Pass the Darnell-Rose Pre-flight Inspection?

- Is your cart easy to push or pull?
- Do your wheels soil carpets?
- Does your caster hold up under heavy usage?
- Does one caster fit all of your carts?
- Are your casters FAA legal?

For years, Airlines have suffered with the high cost of inferior meal and beverage cart casters. The new Darnell *CartMaster* is the answer to this problem. Our patented design makes brake adjustment, wheel replacement, lubrication, and damaged swivels a thing of the past. Flight attendants love how easily carts swivel and roll when equipped with *CartMaster* casters. Specially designed Neoprene wheels reduce expensive cart damage by absorbing shock on both carpeted and non-carpeted surfaces. In addition, tests prove that *CartMaster* wheels last 5 to 10 times longer than ordinary wheels used in competitive casters. The *CartMaster* fits nearly all existing meal and beverage carts in today's fleets with a center brake mechanism adjusted and preinstalled at the factory.

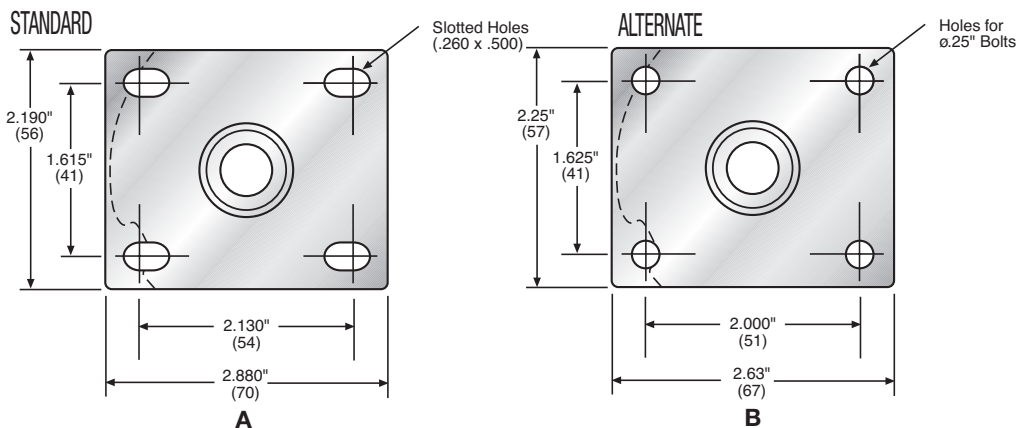
The *CartMaster* by Darnell-Rose is a maintenance free caster that will greatly reduce the high cost of expensive caster replacement and installation.



Part Number 621050  
- PMA Part -  
Other FAA PMA items available

**NEW**  
Single Rigid Cartmaster

### TOP PLATE







Stainless steel pin, spring, and rivet will not corrode.

Gray non-marking wheels ensure cleaner carpets.

Universal mounting plate installs easily on nearly all carts.

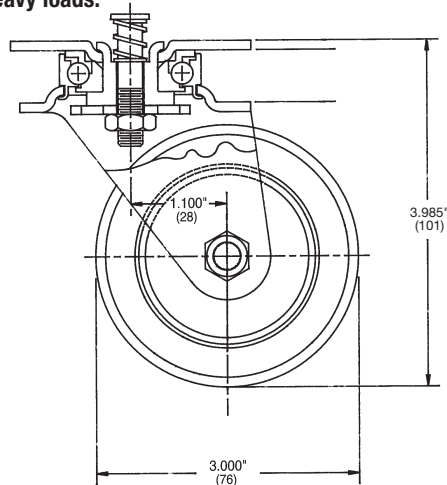
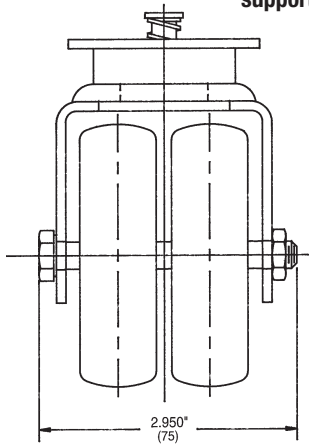
Thread guards prevent floor debris from snagging wheels.

Heat treated caster assembly withstands severe shock loads without failure.

Soft Neoprene tread absorbs shock to stabilize carts.

Ball bearings require least effort to push/pull cart through narrow aisles.

Two layer hard inner core adds strength to support heavy loads.



Patented RADIAL THRUST BEARING uses the latest technology to assure easy swivel movement and longer life. Sealed bearing is permanently greased at the factory and will

FAA PMA PQ2208NM Meets FAR & Boeing Specifications

never require maintenance or lubrication. Withstands shock loads much better than conventional swivel bearings.

**Also Available in  
Stainless Steel  
P/N 622052**

## Cartmaster

Diameter	Tread Width	Load Capacity	Brake Pin Height Inches (mm)	Part Number	Approx. Weight Pounds (kg)	Overall Height	Swivel Radius Inches (mm)	Top Plate	Finish
<b>3</b> (76.2 mm) each wheel	<b>7/8</b> (22.23 mm) each wheel	<b>200 lbs</b> (90 kg)	.312 (7.92)	621050-PMA	1.72 (.78)	3.985 (101.22 mm)	2.6 (66.04)	A	Bright Zinc
			(Non-Brake)	621050-02	1.62 (.74)		2.6 (66.04)	A	Bright Zinc
			.295 (7.49)	621050-03	1.72 (.78)		2.6 (66.04)	A	Yellow Zinc Chromate
			.375 (9.53)	621050-04	1.72 (.78)		2.6 (66.04)	A	Bright Zinc
			.220 (5.59)	621050-05	1.72 (.78)		2.6 (66.04)	A	Bright Zinc
			.118 (3.00)	621050-06	1.72 (.78)		2.6 (66.04)	A	Yellow Zinc Chromate
			.312 (7.92)	621050-07	1.72 (.78)		2.6 (66.04)	A	Yellow Zinc Chromate
			(Non-Brake)	621050-08	1.62 (.74)		2.6 (66.04)	A	Yellow Zinc Chromate
			.270 (6.86)	621050-09	1.72 (.78)		2.4 (60.96)	A	Yellow Zinc Chromate
			.330 (8.38)	621050-10	1.72 (.78)		2.4 (60.96)	B	Bright Zinc
			.312 (7.92)	622052	1.72 (.78)		2.6 (66.04)	A	Stainless Steel

## Rigid Cartmaster with Brakes

Diameter	Tread Width	Load Capacity	Brake Pin Height Inches (mm)	Part Number	Approx. Weight Pounds (kg)	Overall Height	Swivel Radius Inches (mm)	Top Plate	Finish
<b>3</b> (76.2 mm)	<b>1 1/4</b> (31.75 mm)	<b>200 lbs</b> (90 kg)	.138 (3.51)	621923-PMA	1.18 lb (.535 kg)	4.105 (104.3 mm)	(none)	A	Yellow Zinc Chromate
			.310 (7.87)	621923-02					